



## QuadView UHDx KVM

### Multi-Image Processor with KVM Control

The *QuadView*<sup>®</sup> UHDx KVM multiviewer is a high-performance, 4K 60Hz multi-image video processor with remote keyboard/mouse control for up to 4 computers simultaneously displayed in windows in a variety of customizable layouts.

*KlickSimple*<sup>™</sup> navigation provides the user seamless switching of control between computers by simply moving the mouse to the desired computer window.

Up to 6 video sources connect directly to the unit, 4x HDMI 2.0 and 2x DisplayPort 1.2. Enhanced operator station configurations support multi-head sources and a dual-display arrangement when interconnecting two *QuadView* UHDx KVM processors.

The BYOD auto source detect capability adjusts the display layout to show all connected sources on a single screen. It's possible to mix and match input resolutions, scale a single source up to full screen, and route any input to any window.

Control options include the front panel, a built-in web interface, and third-party control via Telnet and RS-232, which streamline the selection of pre-set or customized layouts, video sources, and the inclusion of digital or analog audio from other sources.

*QuadView* UHDx KVM's flexibility and capability make it the ideal multi-source display and control solution for process control stations, command centers, control rooms, security operation centers, medical monitoring stations, and industrial control systems.

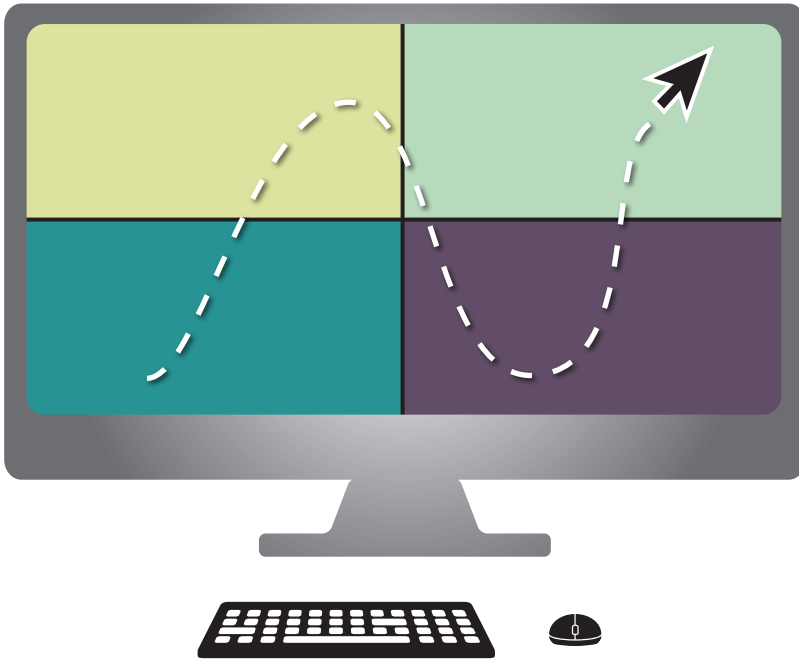
### Key Benefits

- Up to 4K 60Hz input resolution
- Up to 4K 60Hz display resolution
- Customizable display layouts
- Switched inputs:
  - 4x HDMI and 2x DisplayPort
- Multi-head source support
- HDMI 2.0 output
- HDCP 2.2 & 1.4 support
- Dual-display configuration support
- Analog and optical audio outputs



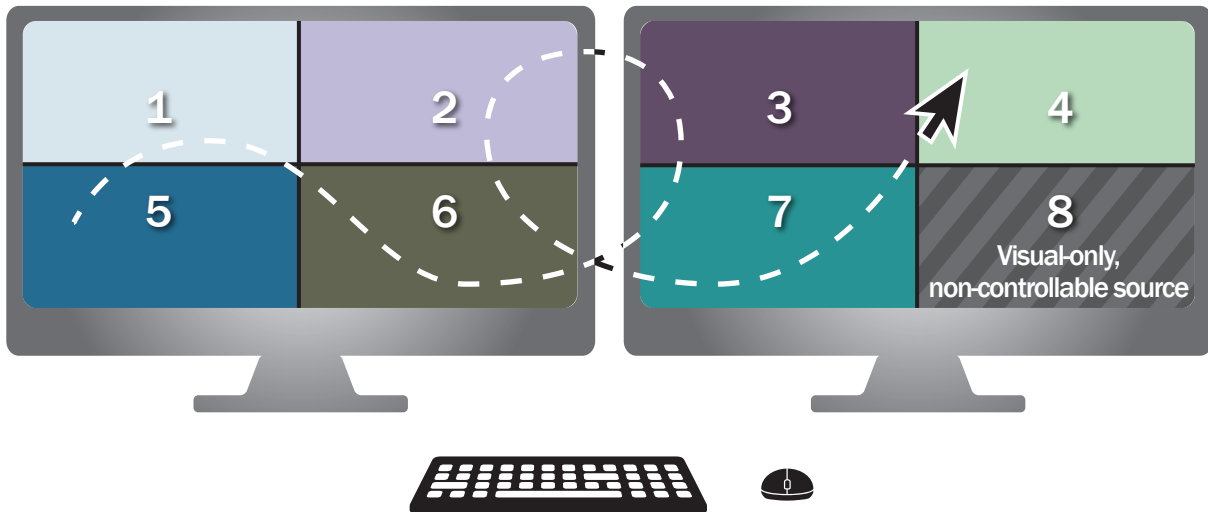
[Learn more at rgb.com](http://rgb.com)





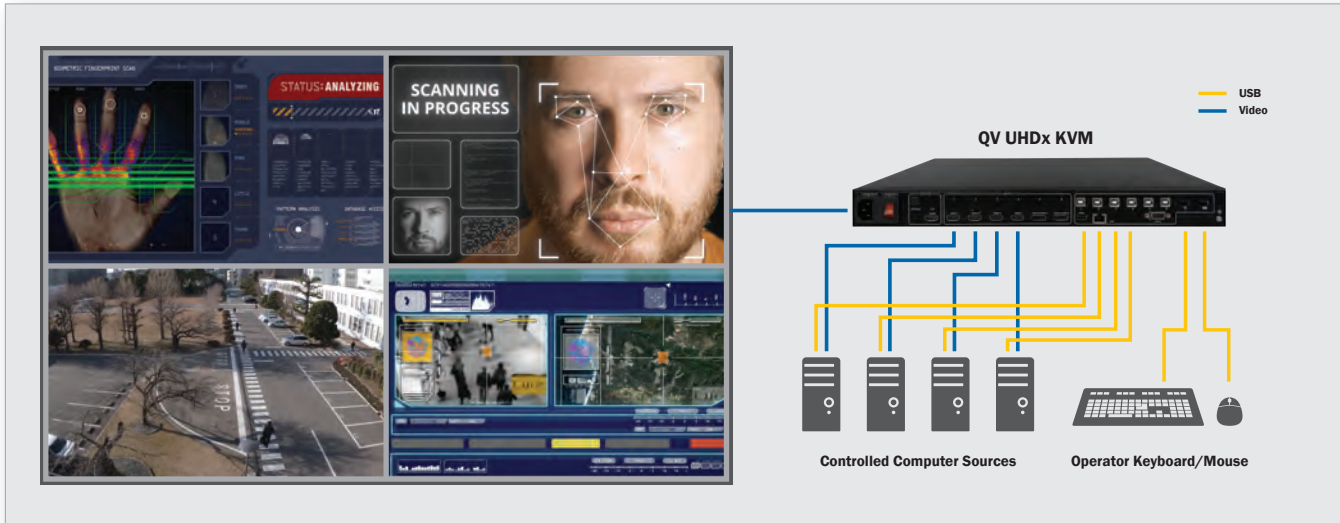
### Multi-head Source Configuration

Supports multi-head sources, such as a quad-head PC. *KlickSimple* lets you seamlessly navigate the mouse to any window to operate within the multi-head controllable source.



### Dual-display Configuration

Interconnect two *QuadView* UHDx KVM units to display 8 sources and control 7 of them at a time. *KlickSimple* lets you seamlessly navigate the mouse across the two displays, to any window and operate that source.



QuadView UHDx KVM's KlickSimple™ navigation provides seamless switching of control between sources by simply moving the mouse to the desired source window.

## QuadView UHDx KVM Specifications

### Inputs

Video	6 total: 4x HDMI (2.0), 2x DisplayPort (1.2); Multi-head source support
Resolution (maximum)	3840x2160 @ 60Hz
HDCP	2.2 and 1.4 compliant
Audio	6x 3.5mm mini-pin, stereo
USB Ports	2 USB 2.0 Type A 6 USB 2.0 Type B

### Outputs

Video	1x HDMI (2.0); Dual-display configuration is available when interconnecting two QuadView UHDx KVM processors
Supported resolutions	3840x2160 @ 60Hz, 3840x2160 @ 30Hz, 3840x2160 @ 24Hz, 1920x1200 @ 60Hz, 1920x1080 @ 60Hz, 1920x1080 @ 50Hz, 1600x1200 @ 60Hz, 1680x1050 @ 60Hz
HDCP	2.2 and 1.4 compliant
Audio	1x HDMI (embedded), 1x optical, 1x analog (3.5mm mini-pin, stereo)

### Control

Built-in Setup/Configuration/Operation GUI, Front Panel, Telnet, RS-232

### Other Features

Source labeling  
Source cropping

### Physical & Environments

Size (H x W x D)	1.7 x 17.3 x 11.0 inches (1RU) (43.5 x 440 x 280 mm)
Weight	7.3 lbs (3.3 kg)
Power Supply	100 - 240VAC / 50-60Hz
Power consumption (max.)	15 Watts (max.)
Operating Temperature	+32° to +104° F (0° to +40° C)
Storage Temperature	-4° to +140° F (-20° to +60° C)
Humidity (storage/operating)	20% to 90% (non-condensing)

QVUHDxKVM20200824-02



1101 Marina Village Pkwy, Suite 101 Alameda, CA 94501  
(510) 814-7000 www.rgb.com