

**High performance parallel display processing**

**Full resolution and frame rate for every signal displayed**

**Intuitive GUI**

**2x4 wall with up to 24 windows with MediaWall Duo 2000**

**2x6 wall with up to 32 windows with MediaWall Duo 2500**

**Flexible window configuration**

**Global and regional windows**

**IP network control**

## MULTI-SCREEN CONTROLLERS FOR VIDEO/DATA DISPLAY

**MediaWall Duo 2000/2500**  
**Real Time Display Wall Systems**

The MediaWall® Duo™ system is an innovative solution for 2x4 and 2x6 display walls. This is parallel image processing at its best. Two MediaWall processors working in tandem under the control of a unifying control application. The result...best of class performance and unparalleled ease of use.

The MediaWall Duo delivers full functionality for larger display wall arrays with one easy to use virtual control panel. Even with the maximum of thirty-two inputs displayed simultaneously, real time performance is maintained with no loss of image quality or update rate. Graphic and video windows can be freely placed where desired anywhere on the array.

The MediaWall Duo 2000 provides up to twelve graphic and twelve video inputs for simultaneous display across a 2x4 array. The MediaWall Duo 2500 supports up to sixteen graphic and sixteen video inputs across a 2x6 array. Input windows can be configured to be global (anywhere on the wall) or regional (located on the left half or right half of the wall).

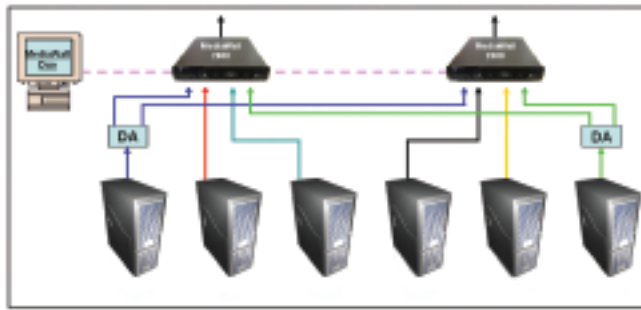
The system employs MediaWall purpose built processors with an embedded operating system, offering true plug-and-play installation and superior performance to PC-based architectures.

The MediaWall Duo software application, an extension of RGB Spectrum's industry leading WCP (Web Control Panel) software runs remotely under Windows® 2000 or XP.

**See the MediaWall 2000 and MediaWall 2500 data sheets for more information.**

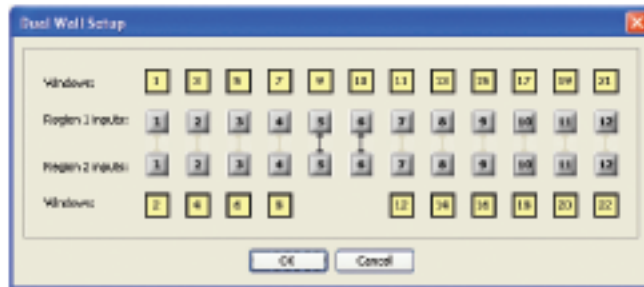
**RGB SPECTRUM®**  
a visual communications company™





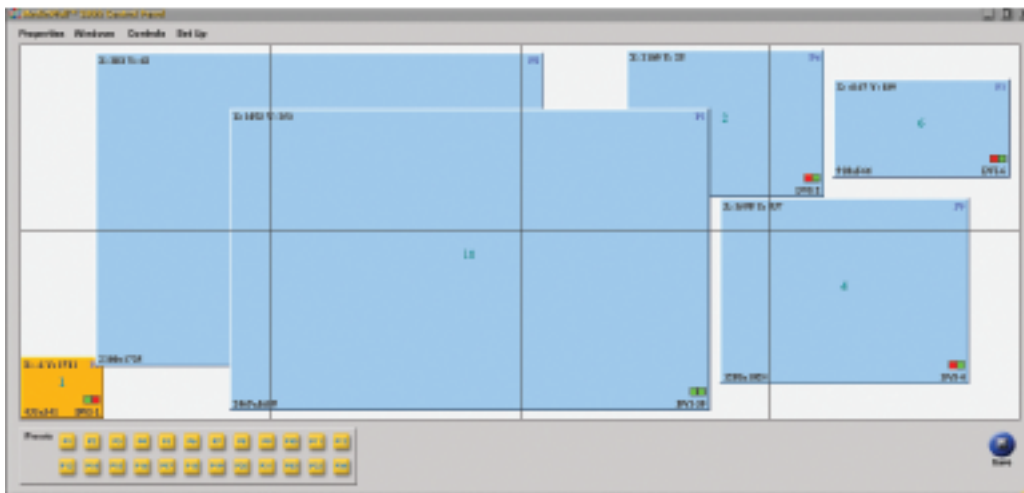
### A MediaWall Duo 2000 2 x 4 Configuration

For maximum flexibility, inputs are connected to two MediaWall processors through a distribution amplifier or a routing switcher. Inputs that appear on half of the wall are connected to individual processors only.

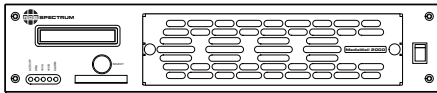


### Input Configuration Panel

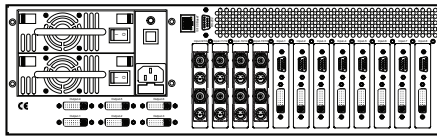
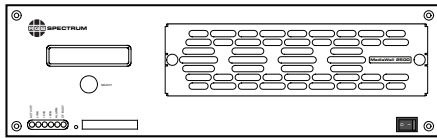
Global windows that can be displayed anywhere are easily created by linking processor inputs. Window numbers change dynamically as the inputs are configured. All inputs can be configured as global or regional.



### MediaWall Duo 2000 Virtual Control Panel – 2 x 4 Configuration



MediaWall Duo 2000 Processor (1 of 2 units)



MediaWall Duo 2500 Processor (1 of 2 units)

## Specifications

### High Resolution Inputs

RGB Analog	Non-interlaced (Duo 2000) Interlaced and non-interlaced (Duo 2500)
Number / Type	12 x analog RGB / YPbPr / HDTV (Duo 2000) 16 x analog RGB / YPbPr / HDTV (Duo 2500)
Video Level	Nominal 0.7V pk - pk
Input Impedance	75 Ohms
Sample Rate	Up to 165 MHz
Horizontal Scan Rate	12 kHz to 125 kHz
Frame Rate	Up to 200 Hz
Resolution	640 x 480 - 1920 x 1200 pixels
Sync	Sync on green, separate composite sync, or separate H-drive and V-drive.
Connector Type	15-pin HD

### DVI Digital

Number	12 x DVI single link, to 1920 x 1200 (Duo 2000) 16 x DVI single link, to 1920 x 1200 (Duo 2500)
Connector type	DVI-I

### Video Inputs

#### Analog Composite

Number	12 x composite, 12 x S-Video (Duo 2000) 16 x composite, 16 x S-Video (Duo 2500)
Video Level	Composite 1.0 V pk - pk nominal
Format	625 line PAL, 525 line NTSC
Input impedance	75 Ohms
Connector type	Composite video: BNC (female) S-Video: 4 pin mini DIN (female)

### High Resolution Outputs

Number / Type	8 x RGB analog / DVI digital (Duo 2000) 12 x RGB analog / DVI digital (Duo 2500)
Resolution	640 x 480 - 1920 x 1200 pixels non-interlaced
Video Level	Nominal 0.7V pk - pk
Sample Rate	Up to 165 MHz
Sync	Sync on green, separate composite sync, or separate H-drive and V-drive.
Connector Type	DVI - I

### Features

Labels, Borders, Backgrounds, Logos, Pan and Zoom, Presets, Window Animation, Freeze Frame, Compact Flash Card Reader, Redundant Power Supplies, On-Screen Digital Clock, On-Screen Cursor Control

### Other

Power	90 - 264 VAC autorange 47 - 440 Hz (Duo 2000), 50/60 Hz (Duo 2500)
Control	Command line using RS-232 or Ethernet 10/100 BASE-T Graphical User Interface using internal web server
Size	Width 17.25" Depth 18" Height 7.0" (Duo 2000), 10.50" (Duo 2500)
Weight	50 lbs/22 kg (Duo 2000), 60 lbs/26 kg (Duo 2500)



### **Corporate Headquarters**

950 Marina Village Parkway  
Alameda, California 94501 USA  
TEL: (510) 814-7000  
FAX: (510) 814-7026  
WEB: [www.rgb.com](http://www.rgb.com)  
e-mail: [sales@rgb.com](mailto:sales@rgb.com)

### **European Headquarters**

Rootweg 24  
5721 VK Asten  
The Netherlands  
TEL: +32.11.515600  
FAX: +32.11.515601  
e-mail: [pspronk@rgb.com](mailto:pspronk@rgb.com)



**RGB SPECTRUM®**  
a visual  
communications  
company™

