

## DISPLAY MULTIPLE COMPUTER & VIDEO SOURCES ON A SINGLE SCREEN

### QUADVIEW *plus*

Four Window Display Processor

Universal video /  
computer inputs

4 windows;  
12 switched inputs

Scale, position,  
pan and zoom inputs

Output resolution  
up to 1600 x 1200

RS-232 control

4:3 and 16:9 displays

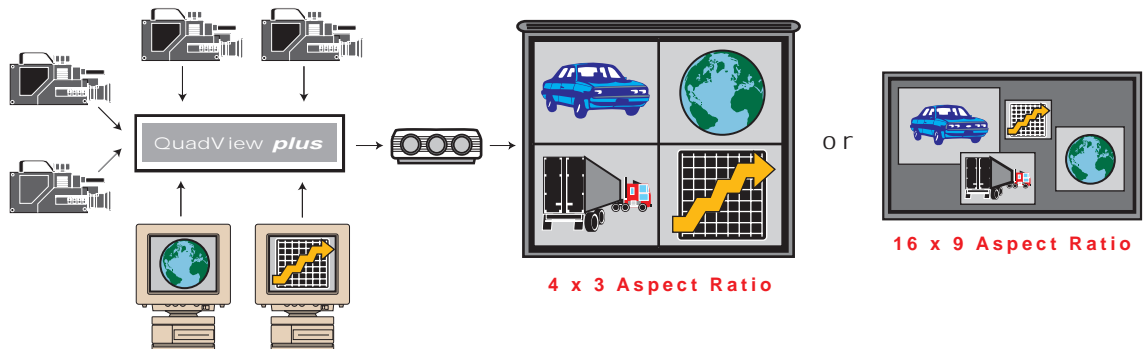
The QuadView™ *plus* is the ideal solution for applications where up to four signal sources must be displayed on a single screen. Each input channel offers a choice of high resolution RGB, S-Video, component or composite video.

Display alternatives are virtually infinite, and include quad split, side-by-side, picture-in-picture, and overlapping windows. Each input can be scaled and positioned anywhere on the screen, as well as panned and zoomed to emphasize areas of particular interest.

The QuadView *plus* processor is easily installed and compatible with virtually all PCs and workstations. Functions are controlled remotely via the RS-232 port. Optional VCP™ software controls the system under Windows.

The QuadView *plus* processor is an excellent solution for applications requiring large screen projection, remote video monitoring, command-and-control, teleconferencing, and multimedia display.

Output resolution is user-selectable up to 1600 x 1200 pixels. DVI output is available for display devices that accept a digital signal.



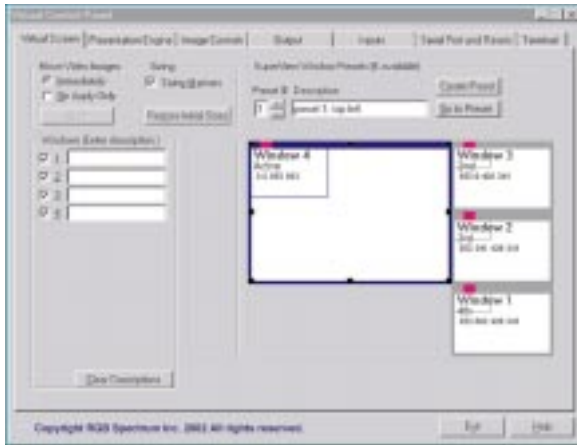
Command Centers

Control Rooms

Communications Centers

Presentation Rooms

Network Operations Centers

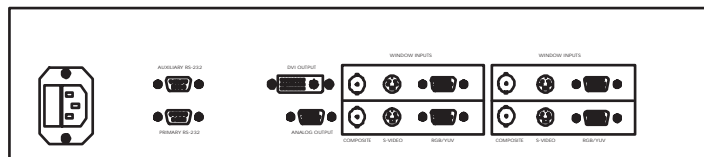
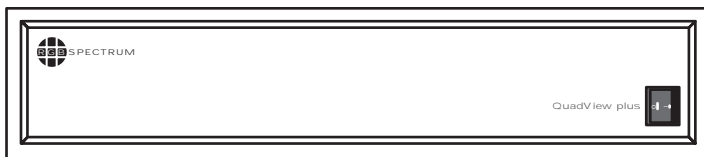


## VCP™

### Virtual Control Panel

The Virtual Control Panel (VCP) software supports a wide variety of RGB Spectrum products. VCP runs on PCs under Windows.

The VCP application provides comprehensive control with easy point-and-click access to functionality.



### Front and Back Panels

## Specifications

### Input Signals

Number	4 RGB/video channels
Type	RGB: 640 x 480 to 1600 x 1200 pixels Video: NTSC/PAL composite, S-Video, Y P <sub>b</sub> P <sub>r</sub> component
Horizontal scan rate	15 kHz to 90 kHz interlaced or non-interlaced
Video levels	0.7 V to 1.0 V
Sync type	Sync on green, separate composite sync, or separate H-Drive and V-Drive
Connectors	RGB/Component: 15-pin HD D-Sub (female) Composite: BNC (female) S-Video: 4-pin mini DIN (female)
Image controls	Position, scaling, freeze frame, pan and zoom, brightness, contrast, saturation, hue, gamma

### Output Signal

Horizontal scan rate	15 kHz to 100 kHz interlaced or non-interlaced
Resolution	640 x 480 to 1600 x 1200 pixels
Video levels	0.7 V to 1.0 V
Sync type	Sync on green, separate composite sync, or separate H-Drive and V-Drive
Connector	15-pin HD D-Sub (female)
Digital output	DVI to 1280 x 1024 (option)

### Other

Control	(2) RS-232 serial ports Optional VCP™ control software
Power	100-264 VAC, 47-63 Hz Less than 55 Watts
Size	Width 17.5" (44.5 cm) Depth 18.0" (45.7 cm) Height 3.5" (8.9 cm)
Rackmount	2 RU rackmount kit available
Weight	Approximately 22 lbs. (10 kg.)

Specifications subject to change without notice  
Made in the USA  
©2002 RGB Spectrum



RGB SPECTRUM  
950 Marina Village Parkway  
Alameda, CA 94501 USA  
WEB: [www.rgb.com](http://www.rgb.com)  
TEL: (510) 814-7000  
FAX: (510) 814-7026  
E-mail: [sales@rgb.com](mailto:sales@rgb.com)

