

# MULTIPLE COMPUTER & VIDEO SOURCES ON A SINGLE DISPLAY

**SUPERVIEW 3000**  
Multi-input Display Processor

Universal Video/  
Computer Input  
Channels

Up to 12 Input  
Channels; Up to  
36 Switched Inputs

Independent Resize,  
Position, and Zoom  
For Each Input

Overall System  
Resolution to  
1600 x 1200

Front Panel and  
RS-232 Control

Computer on Video  
Overlays

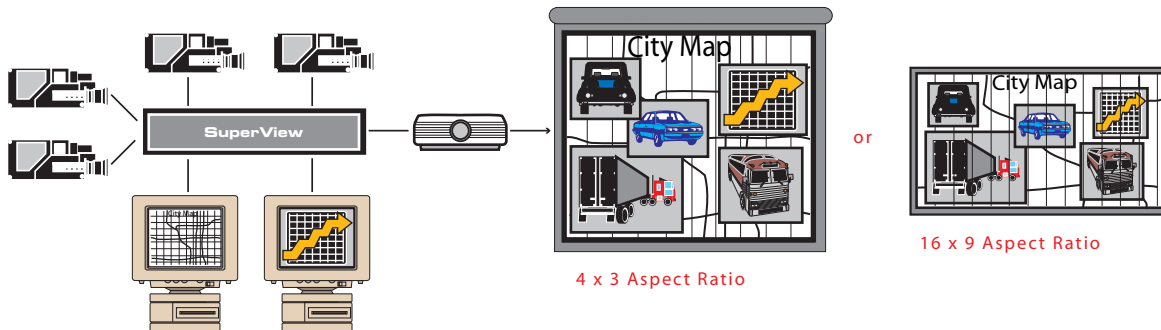
4:3 and 16:9 Outputs

The SuperView™ is the ideal solution for sophisticated applications – wherever multiple signal sources must be displayed simultaneously on a single screen. Each input channel offers the choice of RGB, component S-Video, or composite video. With up to twelve RGB and video input signals displayed simultaneously out of thirty six possible switched inputs, the SuperView processor is a better alternative to videowalls and other arrays of monitors or projectors.

The SuperView processor is easily installed and compatible with virtually all PCs and workstations. Functions can be controlled either from the easy-to-use front panel or remotely via the RS-232 port. Optional VCP™ software controls the system under Windows.

Display alternatives are virtually infinite, and include side-by-side, picture-in-picture, and even overlapping windows. In addition, each input can be panned and zoomed to emphasize areas of particular interest.

Output resolution is user-selectable to 1600 x 1200 pixels. In addition, the output can be genlocked to an external signal, which can be displayed in the background. A DVI output is available for display devices that accept a digital signal.



Command Centers

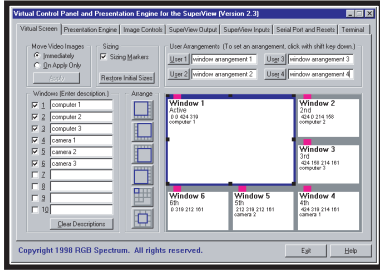
Control Rooms

Communications Centers

Presentation Rooms

Network Operations Centers

Trading Floors

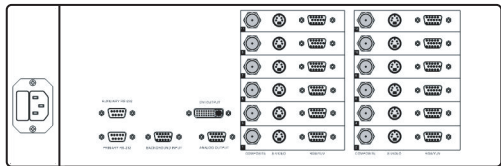
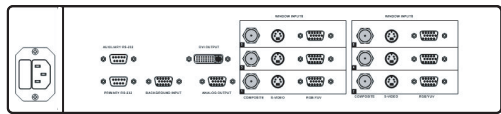


VCP™

Virtual Control Panel

The Virtual Control Panel (VCP) software supports a wide variety of RGB Spectrum products. VCP runs on PCs under Windows 95 and higher.

The VCP application provides comprehensive control with easy point-and-click access to functionality.



Front & Back Panels

Specifications

Input Signals (in windows)

Number	4 to 12 RGB/video channels, factory configured (12 to 36 switched inputs)
Type	RGB: 640 x 480 to 1600 x 1200 pixels Video: NTSC/PAL composite, S-Video, Y P <sub>b</sub> P <sub>r</sub> component
Horizontal scan rate	30 kHz to 90 kHz interlaced or non-interlaced
Video levels	0.7 V p-p
Sync type	Sync on green, separate composite sync, or separate H-Drive and V-Drive
Connectors	RGB/Component: 15-pin HD D-Sub (female) Composite: BNC (female) S-Video: 4-pin mini DIN (female)
Image controls	Position, scaling, freeze frame, pan and zoom, brightness, contrast, saturation, hue, gamma, chroma key (requires genlock option)

Genlock / Background Signal (Option)

Horizontal scan rate	15 kHz to 100 kHz interlaced or non-interlaced
Resolution	640 x 480 to 1600 x 1200 pixels
Video levels	0.7 V p-p
Sync type	Sync on green, separate composite sync, or separate H-Drive and V-Drive
Connectors	15-pin HD D-Sub (female)

Output Signal

Analog	Same as above, to 1600 x 1200 pixels
Digital	DVI to 1280 x 1024 pixels (option) For free run mode only
Free Run Mode	User configurable internally generated sync
Genlock / Background mode	Locked to an external signal, which can be displayed in the background (option)

Other

Control	(2) RS-232 serial ports Optional VCP™ control software Optional front panel
Power	100-264 VAC, 47-63 Hz Less than 100 Watts
Size	2 RU / up to 6 inputs      3 RU / up to 12 inputs Width 17.5" (44.5 cm)    17.5" (44.5 cm) Depth 18.0" (45.7 cm)    18.0" (45.7 cm) Height 3.5" (8.9 cm)      5.3" (13.3 cm)
Rackmount	2 RU / 3 RU rackmount kits available
Weight	Approximately 22 lbs. (10 kg.)