



## Specifications

### High Resolution Inputs

RGB Analog	Non-interlaced
Number	Up to 6 analog RGB / YPbPr / HDTV
Video Level	Nominal 0.7V pk - pk (1.0V composite pk - pk)
Input Impedance	75 Ohms
Sample Rate	Up to 165 MHz
Horizontal Scan Rate	12 kHz to 125 kHz
Frame Rate	Up to 100 Hz
Resolution	640 x 480 - 1920 x 1200 pixels
Sync	Sync on green, separate composite sync, or separate H-drive and V-drive
Connector type	DVI-I (Integrated analog / DVI 29 pin connector)

### DVI Digital

Number	Up to 6 DVI single link
Maximum bandwidth	1.65 Gbps / channel (up to 1600 x 1200 pixels)
Connector type	DVI-I (Integrated analog / DVI 29 pin connector)

### Composite Video Inputs

Number	Up to 27 composite video
Video Level	1.0 V pk - pk nominal
Format	625 line PAL, 525 line NTSC
Input impedance	75 Ohms
Connector type	HD-15 breakout cable to female BNCs

### High Resolution Outputs

Number	Up to 4 RGB analog / DVI digital
Resolution	640 x 480 - 1920 x 1200 pixels
Video Level	Nominal 0.7V pk - pk
Sample Rate	Up to 165 MHz
Sync	Sync on green, separate composite sync, or separate H-drive and V-drive.
Maximum bandwidth	1.65 Gbps / channel (DVI Single link)
Connector type	DVI-I (Integrated analog / DVI 29 pin connector)

### Features

Labels, borders, backgrounds, foreground graphics, logos, pan and zoom, presets, freeze, mullion compensation, motion detection, on-screen cursor control

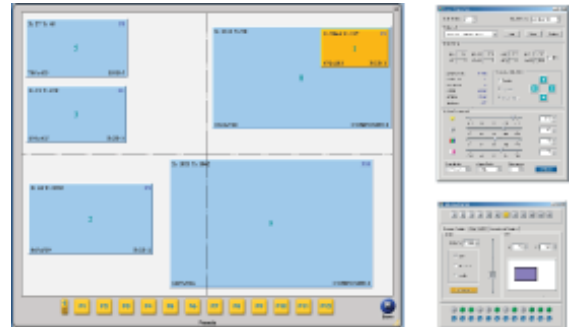
### Options

Compact flash card reader, digital clock

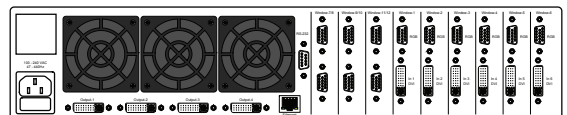
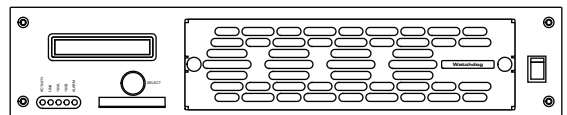
### Other

Power	88 - 132 / 176 - 264 VAC autorange 47 - 440 Hz. Less than 100W
Control	Command line using RS-232, or Ethernet 10/100 BASE-T
Size	Graphical User Interface using internal web server Width 17.25" Depth 18" Height 3.5"
Weight	25 lbs. (11 kg)

Model	Input Signals		Output
	RGB/DVR	Video	
634	6	27	4
631	6	27	1
222	2	18	2
221	2	18	1



X.TV<sup>®</sup> control screens are accessible locally or remotely over any internet browser.



The Watchdog processor offers a true plug-and-play architecture. Composite video inputs are connected via standard BNC breakout cables.

Corporate Headquarters  
950 Marina Village Parkway  
Alameda, California 94501  
TEL: (510) 814-7000  
FAX: (510) 814-7026  
WEB: www.rgb.com  
e-mail: sales@rgb.com

**RGB SPECTRUM<sup>®</sup>**  
a visual  
communications  
company™

